

IDENTIFICATION

Species: *Oryza brachyantha*

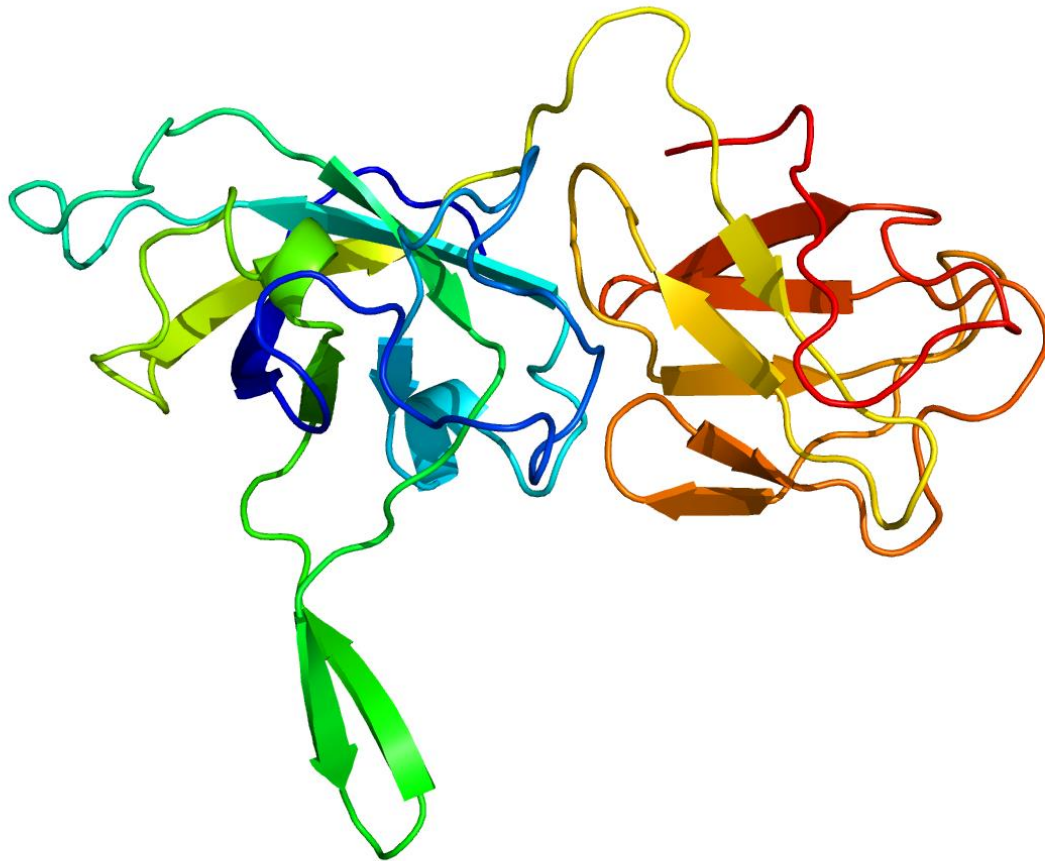
Locus: XP_006645709

Gene Model: XP_006645709.1

Description: ObEXPA-02

Family: Alpha Expansin

3D structure:



GENOME DATABASES

NCBI: https://www.ncbi.nlm.nih.gov/genome/10862?genome_assembly_id=1593936

KEGG: <https://www.genome.jp/entry/T02995>

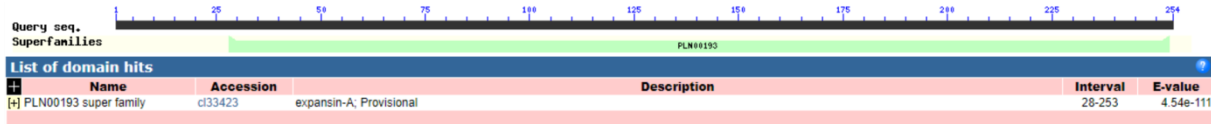
EXTERNAL RESOURCES

<https://rice-genome-hub.southgreen.fr/organism/1941498>

GENE STRUCTURE



DOMAIN ARCHITECTURE



SEQUENCES

Peptide

>ObEXPA-02

MEETKVLVVLFLSLCASRLGGSAADQQWTAANATFYGGSDASGTMGGSCGYGNMY
SAGYGTATTALSTALYGDGASCGACYVVTCDAAATRWCNGTSTVTATNFCPPN
YNEASDAGGWCNPPRRHFDMSQPAGETIAVYSAGIVPVRYARTPCSRSGGIRFGVSG
HDYFELVLSNVAGSGAVAAA WVKGSRTDWLMSRNWGQNWQSNAYLTGQALSF
KVQADDGSVVTAYDVAPANWQFGSTYQSSVNF

CDS (coding sequence)

>ObEXPA-02

GAGACATGCTCTTCTTCTGCAAGCTGGAGGAGGAAGAAGATCAATTCAGGTTTCA
GCAGCGAGAATGGAGGAGACGAAGGTGCTGGTCGCTTGTTCCTGAGCCTGTGCG
CGTCTCGCCTGGGCGGCTCGGCGGCTGATCAGCAGTGGACGGCGGCCAACGCGA
CGTTCTACGGCGGCAGCGACGCGTCCGGGCACCATGGGTGGTTCGTGTGGCTACGG
CAACATGTACAGCGCCGGGTACGGGACGGCCACGACGGCGCTGAGCACGGCGCT
GTACGGCGACGGCGCGTCCGTGCGGGCGGTGCTACGTCGTCACCTGCGACGCCGCG
GCGACGAGGTGGTGCAAGAACGGCACGTCGGTGACCGTGACGGCGACCAACTTC
TGCCCGCCGA ACTACAACGAGGCCAGCGACGCCGGCGGGTGGTGAACCCGCCG
CGCCGCCACTTCGACATGTCGCAGCCGGCGGGGAGACGATCGCCGTGTACAGC
GCCGGCATCGTGCCCGTCAGGTACGCGCGCACGCCCTGCAGCCGGAGCGGGCGG
ATCCGGTTCGGCGTCAGCGGGCACGACTACTTCGAGCTGGTGCTCGTCAGCAACG
TCGCCGGCAGCGGGCGCCGTGGCGGGCGGCGTGGGTGAAGGGATCAAGGACGGACT
GGCTGGCCATGAGCCGGA ACTGGGGGCAGAACTGGCAGAGCAACGCGTACCTCA
CCGGACAAGCGCTGTCTGTTCAAGGTTCAAGGCCGACGACGGCAGCGTCCGTCACGG
CGTACGACGTCGCGCCGGCGAACTGGCAGTTCGGGTCCACGTACCAGTCCAGCGT
CAACTTCAGCTAGGCCTGTAGGGAATTTTCTTCTTGGGCCAAATTAGCTTACGTG
TACAGATTTGATGGGGCTGGATTATTGGGCTGATTCAAAGCCTGCTTGGACTTT
GGAGATGTAGGATTTCTGTTGGGATGGCTGGCCCAAATGAGGTCACAGCTGTTGG
ATCTTCGATTTGCTAAAAGCATGCACAGCCCTCTTAAATCATTGTGAGTAAAAT
ACATAGACGGTCTAAACTTGTCTATCCATATTATCTGCATCTCTGAATTTTAAAAA
TATATTTTAAAGGTCCATAAACATATCCAGGTGCCAACACCGAT

Nucleotide

>ObEXPA-02

GGTAGTACCGACAACGATGAGCAAAACCGGGTGGCAGTGGCTTGTGAGCTGGTG
CATAGAGAGAGGCCAAAGTAGAACTCGTCGTCCTGTGCTTCTAGATCCGAGTGGA
TAACGACATAGGGTAGTGCTGGCAACGGATCAAGGTATTTGGATTCAAGCATCAA
CAAGCTCCTCCTACTAACGATTTTGGTGCTTGACGAGCCCGTCTTGGCTTGGAGGC
AAGGCGGTTATGAGCGAAGTGAGAGTGACGAATAAGTCAACTTAGTGAATAAGG
TAGATGTTACCCATGCCTCCTCTGTCGGTCTTAATCGGCCTTGTTGCCACAACCTGG
GCATCTCCTCTTCGACCTTCTCTAAGTTCGTCTGAAGAACTGGTCTTTGAGACCTC
TATTTAACCGCGCTGTAGGAGAGAGATTAGAAAGCTGCTGAGATGTGGACCTCAT
CCTTTATGTGAAACTCACATGTTAGGAACAAATTCATAGGATCCACTGTGACATG
CCGCATCGGTGTTGGCACCTGGGATATGTTTATGGACCTTAAAATATATTTTTAAA
ATTCAGAGATGCAGATAATATGGATAGACAAGTTTAGACCGTCTATGTATTTTAC
TCGACAATGATTTAAGAGGGCTGTGCATGCTTTTAGCAAATCGAAGATCCAACAG
CTGTGACCTCATTGGGGCCAGCCATCCCAAACGAAATCCTACATCTCCAAAGTCC
AAGCAGGCTTTGAATCAGGCCCAATAATCCAGCCCATCAAATCTGTACACGTAA
GCTAATTTGGCCCAAGAAGGAAAATTCCCTACAGGCCTAGCTGAAGTTGACGCTG
GACTGGTACGTGGACCCGAACTGCCAGTTCGCCGGCGCGACGTCGTACGCCGTGA
CGACGCTGCCGTCGTCGGCCTGAACCTTGAACGACAGCGCTTGTCCGGTGAGGTA
CGCGTTGCTCTGCCAGTTCTGCCCCAGTTCGGGTCATGGCCAGCCAGTCCGTCC
TTGATCCCTTCACCCACGCCGCCACGGCGCCGCTGCCGGCGACGTTGCTGAC
GAGCACCAGCTCGAAGTAGTCGTGCCCGCTGACGCCGAACCGGATGCCGCCGCTC
CGGCTGCAGGGCGTGCGCGCGTACCTGACGGGCACGATGCCGGCGCTGTACACG
GCGATCGTCTCCCCCGCCGGCTGCGACATGTCGAAGTGGCGGGCGCGGGCGGTTGC
ACCACCCGCCGGCGTCGCTGGCCTCGTTGTAGTTCGGCGGGCAGAAGTTGGTCCG
CGTCACGGTCACCGACGTGCCGTTCTTGCACCACCTCGTCGCCCGGGCGTCCGAG
GTGACGACGTAGCACGCGCCGCACGACGCGCCGTCGCCGTACAGCGCCGTGCTC
AGCGCCGTCGTGGCCGTCCTCGTACCCGGCGCTGTACATGTTGCCGTAGCCACACG
AACCACCTGCAACAACAAACAAAAATGTCTCAATCTAAGCGATGCATATGCATGC
AAGCATCGGCCTCCGGGTGATCAAACCCGTCGAGGGTGTTCCGGCCTCGATCAGTT
TACCCATGGTGCCCGACGCGTCGCTGCCGCCGTAGAACGTCCGTTGGCCGCCGT
CCACTGCTGATCAGCCGCCGAGCCGCCAGGGCGAGACGCGCACAGGCTCAGGAA
CAAGACGACCAGCACCTTCGTCTCCTCCATTCTCGCTGCTGAAACCTGAATTGATC
TTCTTCCTCCTCCAGCTTGCAGAAGAAGAGCATGTCTCCTCTGCTACTTATAGCTA
CGAAATGGCCGGCGAGGCGACGTTTGACGAGGCGAGATCATGCGCGGTACGCAT
GCATGTGGCTTGACTGATTCTCTGATCAATCATGGCCGGTTCGTCAACTCATCGT
GGATCATCACGCATGGTAACAATAATCAACTAACAGCTAATCAATAGCACACAC
GACAGCAGATAAGCCTATGGGGACGCACACTAATCAGTAGATCAACTCATGAAT
GTTTCTGATGTGACATGGTCAATCCTTCGCCTGAACCACGATGTGATCAGAGTAT
GATCGATGTCACGGCCAGGTGATTGTTTCTTGAAGGGTGTTTCACCGGTGCTGA
TCACGGGCTGTCCGGTTCGTTCTTGAATTGTAGAGTTCCATACGATAGAGTTTCA
GTCCGTGACCCTGTCATTTTTGTATGATCAATTGGCCCTTGGTGATCTCAGAATTC
TGTAATGCATCTCATGGATCCTTGGCAAATATCCAAAAGAAA