

## IDENTIFICATION

**Species:** *Physcomitrium patens*

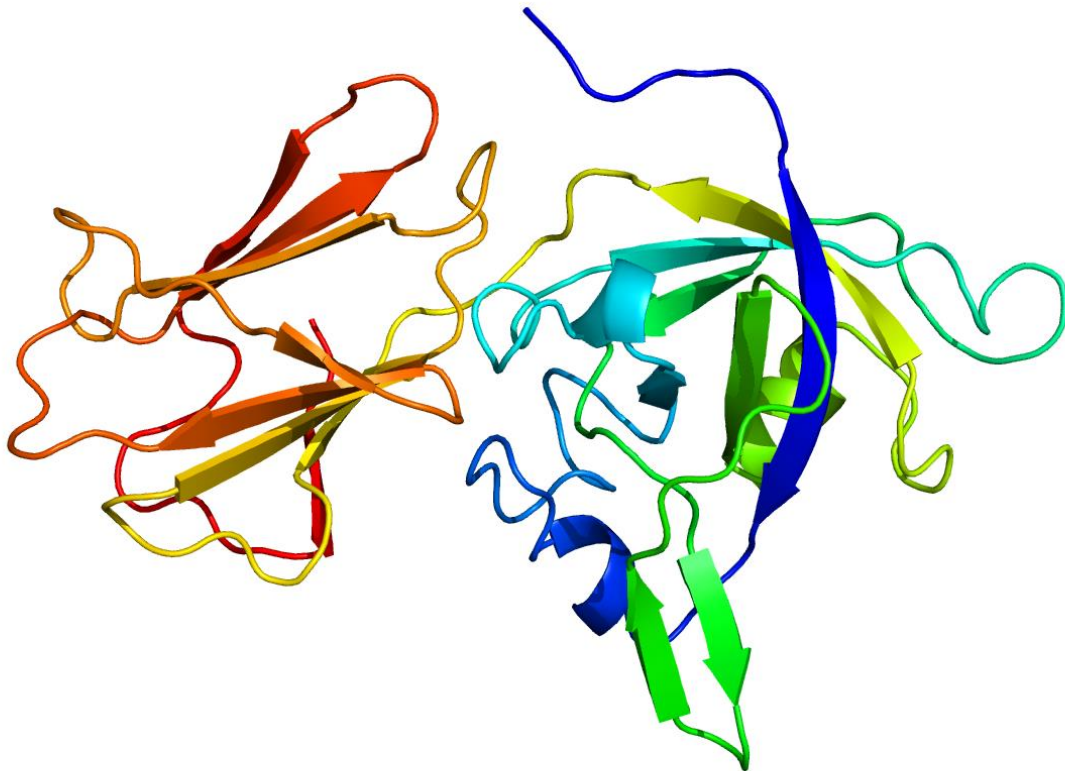
**Locus:** Pp3c24\_15400V3

**Gene Model:** Pp3c24\_15400V3.3.p

**Description:** PpEXPA-43

**Family:** Alpha Expansin

**3D structure:**



## GENOME DATABASES

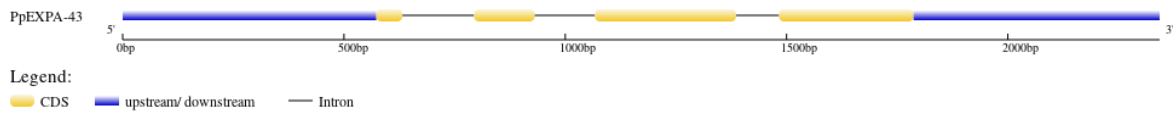
Phytozome: [https://phytozome-next.jgi.doe.gov/info/Ppatens\\_v3\\_3](https://phytozome-next.jgi.doe.gov/info/Ppatens_v3_3)

KEGG: <https://www.genome.jp/entry/gn:T01041>

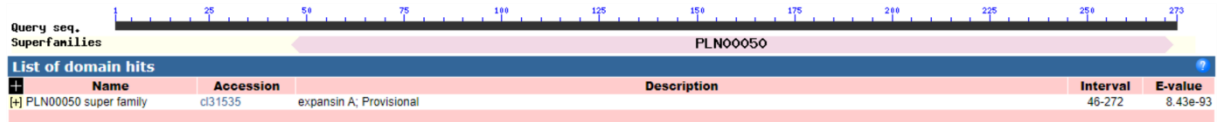
## EXTERNAL RESOURCES

-

## GENE STRUCTURE



## DOMAIN ARCHITECTURE



## SEQUENCES

### Peptide

>PpEXPA-43

MCEWEYGRMGRRRRRRLDVRQMTRYVAHIAVMVMAFLMVRDACSLSEWNEARA  
TFYGGSDAGGTTGGACGYGDLYSTGYGTNTVATSSAIFDRGLACGACYQVKAGSA  
SECQPGTPAIQVTVTNFCPPNPSLPEGNGGWCNPLLHHFDMAMPAFQQIASYRVGIVP  
ILYRRASCVRTGGIRFTMSGHKFMNLVLTNVGGMGDVQTVFIQGSKTKLVAMIRNF  
GQIWQSSVNVSGQRLSFMVMTSDGESVVSARNVAPSDWAYGQTYEGSQF\*

### CDS (coding sequence)

>PpEXPA-43

ATGTGTGAATGGGAGTATGGGAGAATGGGAAGGAGAAGGAGAAGGAGGCTTGA  
TGTGAGACAGATGACGAGGTACGTAGCTCACATTGCGGTGATGGTTATGGCGTTC  
TTGATGGTTCGGGATGCTTGTCTCTGAGCGAGTGGAACGAGGCTCGTGCTACGT  
TCTATGGCGGCAGCGACGCCGGTGAACGACAGGAGGTGCATGTGGCTACGGAG  
ATCTGTACAGCACTGGCTATGGCACCAACACGGTTGCCACAAGCTCCGCTATCTT  
CGACCGAGGCCTTGCTTGCGGCGCTTGTACCAGGTTAAGTGCCTGGTAGCGCA  
TCCGAGTGCCAACCTGGCACCCCGCAATTCAAGTTACCGTGACCAACTTCTGTC  
CTCCTAATCCTTCCCTGCCTGAAGGCAACGGCGGCTGGTGTAACTCCCGCTGCA  
CCATTCGACATGGCCATGCCGGCATTCAACAAATTGCTTCTTACAGAGTTGGC  
ATTGTGCCTATCTTATACCGAAGAGCTTCGTGCGTGAGGACAGGCGGCATCCGCT  
TCACTATGAGCGGACACAAATTTATGAACCTCGTGCTCGTCACCAACGTGGGTGG  
TATGGGGGACGTCCAAACTGTGTTCAATCAGGGGTCTAAGACGAAGTTGGTGGCC  
ATGATCCGGAACCTTGGCCAGATATGGCAGAGCTCCGTGAACGTGAGCGGTCAG  
AGACTCTCCTTCATGGTCATGACCAGCGATGGCGAGAGTGTAGTCTCCAGAAATG  
TGGCGCCTTCGGATTGGGCATATGGTCAGACATATGAAGGTTACAGTTCTAG

### Nucleotide

>PpEXPA-43

TACTTACATACCTACAGACATACATACGTTCAACAATTAGCATGATCTTTTTCTTC  
TCATACATAGCATAATAATAATAATAATAAATACCCATAAACACACACTCAAATA  
GAAGAAGAAGACATGACGTTAGTTGTGTTGTGTTGTGTTTGTAGTTAGTTTGT  
GTTGTGGTGGGGATGTGGAATCCGGGCAAAGAGGGGAAATCAATATGGGCCAG  
GCTGCCCGTCCGTCCCTCGCTGATCTAGGCTTGCTTCTCTGTGCAAAGATGGTGGCC

TGCCTGAGTGCCTGCAGCTTGCCATGGATTCTCTCTCATTTTTATAATAAAAACCAG  
AGTTGGACTCAGCCCCATTCCTTTGCTTGCTCTGGCTTCATTCAATCCCCATCCCT  
GCCTCTGATTTCACTCTCTCTCACAAAAGTGCCTTTTGTGCTTCAGCCGCGTG  
TGTGAGGACAGACTGTGTGTGTTTGTGTGTGGAGGAGGAGAGAGAGAGCTACA  
GCACCCACATTGTCAACACCGGTGTGAAGGGAGAATTTTGTAAAGGGAGAAATTTG  
TTGTTCTTGCATATGGGGGATGTGTGAATGGGAGTATGGGAGAATGGGAAGGAG  
AAGGAGAAGGAGGCTTGATGTGAGGTTGGTTTCTGTGTTTTTGTAGTTAGTGAGG  
TGTTGGAGCTAGGGAAGGTGTTCGTGGATATGTGTTGTCGTGTGTTGGATTTTGTGT  
GTGTGTGTGTGTGTGTTTTTAAAGTGGGTTAGGTTTGGTCTGAGGTATGGAGTTGA  
ATTGCGTTCTTGTGTGCAGACAGATGACGAGGTACGTAGCTCACATTGCGGTGAT  
GGTTATGGCGTTCTTGTATGGTTCGGGATGCTTGTCTCTGAGCGAGTGGAACGAG  
GCTCGTGCTACGTTCTATGGCGGCAGCGACGCCGGTGGAAACGACAGGTAAGTGG  
AGGGTTGACGGTGCCACACCTCATTGAGCTCGAATGCATAATGACCGAGAGTTGC  
TTTTGTTTCTGTAAAAATTAGATCACGACCAGGTTATTCAATGCTCATCGATCTTG  
CCAATTTGGCTTGTAGGAGGTGCATGTGGCTACGGAGATCTGTACAGCACTGGCT  
ATGGCACCAACACGGTTGCCACAAGCTCCGCTATCTTCGACCGAGGCCTTGCTTG  
CGGCGCTTGTACCAGGTTAAGTGCGCTGGTAGCGCATCCGAGTGCCAACCTGGC  
ACCCCCGCAATTCAAGTTACCGTGACCAACTTCTGTCTCCTAATCCTTCCCTGCC  
TGAAGGCAACGGCGGCTGGTGTAACTCCCGCTGCACCATTTCGACATGGCCATG  
CCGGCATTTCACAAATTGCTTCTTACAGAGTTGGCATTGTGCCTATCTTATACCG  
AAGGTATGTGATCACTACCACCTCCATTCGCTCATCGACTGTTGCGAGTTTCTTAT  
GCGTGCTACTTTGTTCTGAAATCATTACGAATTTTGTTCCTCCAGAGCTTCGTGCGT  
GAGGACAGGCGGCATCCGCTTCACTATGAGCGGACACAAATTTATGAACCTCGTG  
CTCGTCACCAACGTGGGTGGTATGGGGGACGTCCAAACTGTGTTTATTGAGGGT  
CTAAGACGAAGTTGGTGGCCATGATCCGGAACCTTGGCCAGATATGGCAGAGCTC  
CGTGAACGTGAGCGGTCAGAGACTCTCCTTCATGGTCATGACCAGCGATGGCGAG  
AGTGTAGTCTCCAGAAATGTGGCGCCTTCGGATTGGGCATATGGTCAGACATATG  
AAGGTTACAGTTCTAGCAAATGCTAATCCGCCGAGGGTATTCTTCTCGCCCATCT  
CCTGACACGCATTCGCCTCATCAATCTCTCTAACTACACACGATGATGCACCGAA  
GCTGTTCGGCAGATTCTCTGTTGTAGTTCTGTTGATTAAGCTGTACAAGTAAGCAA  
CGATCCAGAAGCTTTACATTTTATGGTGACGACGACGACTACGACGACGACAACG  
ACATGAAGGATACTGTTCTAGGGGCCTCTTTGGCTTATGGGGTGTGTAATTCGAA  
GCTACCTCTGATCCACGAGGAGGGTGCCGAGGAGGGCAACAACCCAGGCGGTC  
GTGTGAATAGGTGTAATTCTATCAGAGCCAGCTCCTGTAGGAAGGATACAAGTTT  
AGTTTTCAATCAGAGTATCTGGTGCAGAAATTCGAGTAGGCGTGCCAGTTTTGT  
ACAATACCAGTGTGTATGTGCTTCTCTAGATCTGTGTTTCGCTTCTATTTGCTCAT  
CCAATGAAACAGTTGATTGCGGACCCAACTCTTCAAACCTTTTCGTGTACTCTTCAA  
CATCACACGTCTTGAGGTGGG