

## IDENTIFICATION

**Species:** *Eucalyptus grandis*

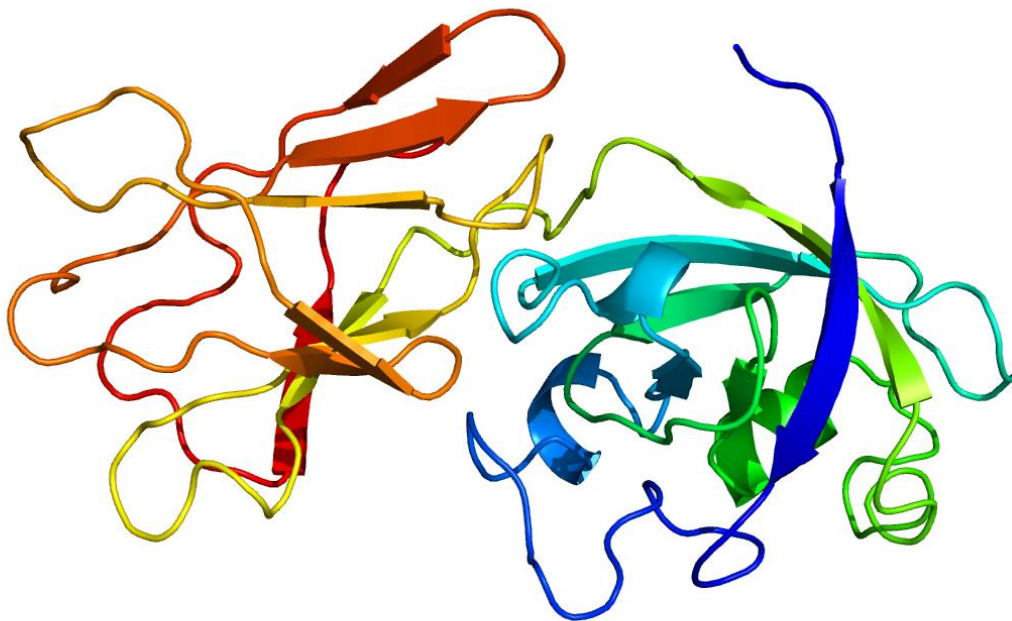
**Locus:** Eucgr.E00317

**Gene Model:** Eucgr.E00317.1.p

**Description:** EgrEXLB-01

**Family:** Expansin Like Beta

**3D structure:**



## GENOME DATABASES

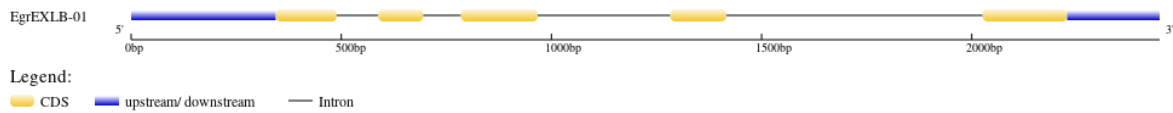
Phytozome: [https://phytozome-next.jgi.doe.gov/info/Egrandis\\_v2\\_0](https://phytozome-next.jgi.doe.gov/info/Egrandis_v2_0)

KEGG: <https://www.genome.jp/entry/T03547>

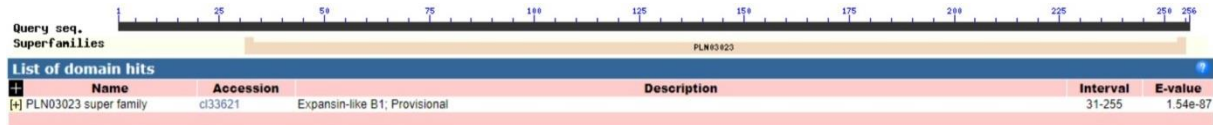
## EXTERNAL RESOURCES

<https://eucgenie.org/>

## GENE STRUCTURE



## DOMAIN ARCHITECTURE



## SEQUENCES

### Peptide

>EgrEXLB-01  
MALKLKLKLLSLSATLFLMQTPANGATCSNCFVSSRASYYPNSTEQGTETGACGFGSF  
GAMINGGDVSAASNLYRSGVGCACGYQVRCTNSKYCSDKGVTVVVTDQGSNDNTD  
FILSQRAYGRMAQTSDAASYIYALGVVDIEYRRVSCSYPNHNITIKIDESSNNPYLGF  
VIWYQQGDKDITAVQLCETQNYVCKLLDRSYGAVWTTTSPPSGPLALRMLLSGDDG  
DETWLVPVNNIPQDWKAGATYDTGVQIS\*

### CDS (coding sequence)

>EgrEXLB-01  
ATGGCTCTTAAGCTCAAGTTGCTTCTCTCTCTCAGCCACCCTCTTTCTCATGCA  
AACTCCGGCCAATGGTGCAACTTGCAGCAACTGCTTTGTCTCTTCTCGTGCCTCCT  
ACTACCCGAATTCGACTGAACAAGGAACAGAGACTGGGGCATGTGGTTTTGGTTC  
ATTTGGAGCTATGATTAATGGCGGGGATGTCTCGGCAGCATCTAATCTCTATCGC  
AGTGGTGTGGTTGTGGCGCTTGTACCAGGTGAGGTGCACCAACAGTAAGTACT  
GCTCAGACAAAGGCGTAACCGTCGTCGTAAGTCAAGGTTCGGGTGATAACAC  
GGATTTCAATCTAAGCCAACGGGCCTATGGCCGAATGGCTCAAACCTCCGATGCC  
GCCAGCTACATATATGCACTTGGTGTGTTGACATCGAATATAGACGTGTTTCCTG  
CAGTACCCAAACCACAATATAACCATCAAGATCGATGAGAGCAGCAATAACCC  
CTATTATTTGGGTTTTGTGATATGGTATCAACAGGGCGATAAGGACATCACTGCG  
GTGCAGCTATGTGAGACTCAGAACTATGTTTGCAAGCTCCTGGACCGGAGCTATG  
GTGCAGTTTGGACAACCACCTCGCCCCCTAGCGGTCCATTGGCCCTGAGGATGTT  
GCTCAGTGGCGATGATGGAGATGAGACGTGGTTGGTTCCTGTCAACAACATACCT  
CAAGACTGGAAAGCCGGAGCAACATATGATACCGGAGTACAGATCAGCTAA

### Nucleotide

>EgrEXLB-01  
GAAACAGTTAAAATCAATGACTTTCTTTCTTACCCAAGGAAACTGGAACACAAG  
GAGAGAAGGAAGAATGAAACACTCAAACAAAATATTCTTCAAGTCAGAAAAGCA  
CATTTGGACGCTATATTCCATGAAGGGGAGATTCTAGTCTAACTATTAGCTGAA  
AAGGATCGTGCGTCAAACCTGCTTCATTTACATTAATACCACTTGCAGAACGTCAA  
AGCCTGAATTTTTTTTACCAAACCAGTAGAATTTACTCTATAAATATTCAGAAAGTT  
CACTGCTTTTCTTGCACCACCACATTGGGATTCTTGGGCTTGAGAGTTGCCTCGTT  
CTGCTATCGCATAATGGCTCTTAAGCTCAAGTTGCTTCTCTCTCTCAGCCACCC  
TCTTTCTCATGCAAACCTCCGGCCAATGGTGCAACTTGCAGCAACTGCTTTGTCTCT  
TCTCGTGCCTCCTACTACCCGAATTCGACTGAACAAGGAACAGAGAGTAAGGAAC

ATTAGAACGAGTAAAATTGTAGATTTTTGTTGCAGATACTATGTGATAAAAATGAA  
TGATTGACAAATGGATATTTCTTATTCAACCGCAGCTGGGGCATGTGGTTTTGGTT  
CATTTGGAGCTATGATTAATGGCGGGGATGTCTCGGCAGCATCTAATCTCTATCG  
CAGTGGTGTGGTTGTGGCGCTTGCTACCAGGTGAGAATCCTGTTAACCGAATTTT  
TGGAATAACTATAATTAGTGTTTATGAGGATACAAAAGTTGTTAATACATGCATG  
ACAACTTCAGGTGAGGTGCACCAACAGTAAGTACTGCTCAGACAAAAGGCGTAAC  
CGTCGTCGTAACCTGATCAAGGTTTCGGGTGATAACACGGATTTTCATTCTAAGCCAA  
CGGGCCTATGGCCGAATGGCTCAAACCTCCGATGCCGCCAGCTACATATATGCAC  
TTGGTGTGTTGACATCGAATATAGACGGTAAGATCATAGTTAGTGCTTGACATG  
TACACTATTGGAAAGTTTTTCATTGGTATCATGTGGATCTGCGATAGCTTTTGCTAA  
ACCAGAGACAAGAGCAAAGAGGTAACGGGAAATTTTTTTCTTATGCACATACCTCT  
GATGTGATGGTTAAACTCTTGCCAAAGAGTGGATTTTTTAATAATTAAGCAAACT  
CAGAGATGCCCGTCTACAGTACAAGTATTACCTGATAATTCCAAGATGAAGTGCT  
GAGATGTTAAGTTAACGGCATGCAGAATGAAGGTTTCGAACTAATCCAAGAATCTC  
AATATTTCCGCAGTGTTTCCTGCAGCTACCCAAACCACAATATAACCATCAAGAT  
CGATGAGAGCAGCAATAACCCCTATTATTTGGGTTTTGTGATATGGTATCAACAG  
GGCGATAAGGACATCACTGCGGTGCAGCTATGTGAGGTAACCTCATTGTCTATCAA  
AGATTGCTCTCGAACCGTTAAATGAACAGTAACTTCGTGATATGCACTGACCCCT  
CTTCCGTGTAACCTGTCAAACCTAGTCAATTCCATGAGGAACCATGAACCTGCC  
TTGCAACCGTGTTTCAGATCCTCATGAACTTTCAGATTTTAAGAAGCTAAAATTTG  
CATTTTTTTGTCATTCTATGGGAGAAGATAAAAACCATCCACTTTGTCTCGAAAATC  
AAATCTATATCCTCATGAACCTACCGATTTCGTGCTAATATGTCCTGTCCATTTGTC  
AATTTGTGTAATTTTGTCTTCTTGTGTCATAAAGGAGCATCTGACAGTAATTAAC  
CTGAACCATAGGTTTTTCGAAATATATGAACTGGTTTTAACGTCAATCTAGTCCATC  
TACTCTCGCATTTTCCATGCTTTCTGCAAGATTTCTCTCGTATCAAACAGTCATCC  
ACTCCGGCTTCTTACAGAAAAAATGGTATCACGTGCATCAAAATACAAAAATTTG  
CTGATAACTGCTCTATGATGAACCGCACTCAGTAGCAATGGTACTTTGAGGATGG  
TATTTCTGACTTTTTTTAATCAAAAAATTTGGCAGACTCAGAACTATGTTTGCAAG  
CTCCTGGACCGGAGCTATGGTGCAGTTTGGACAACCACCTCGCCCCCTAGCGGTC  
CATTGGCCCTGAGGATGTTGCTCAGTGGCGATGATGGAGATGAGACGTGGTTGGT  
TCCTGTCAACAACATACCTCAAGACTGGAAAGCCGGAGCAACATATGATACCGG  
AGTACAGATCAGCTAATGGTTGAAAGCCATGGAATGGAAATGCAGCTGACTGTTT  
TGCAAGATGTTCAATAGAAATAATCGCCATGAGCATTCTTGTCTTTTAATGAGT  
TGTACAATAATTGTTCTCCTTAGAGATGAGCAATGACTTAGCTAGAGAAATGCTT  
ATATGTATTCTTTCAGATTTGGATGAAATATTCATGTACTATGGATGAAGCAATA  
AATCTTGGATTTTGT