

IDENTIFICATION

Species: *Oryza sativa*

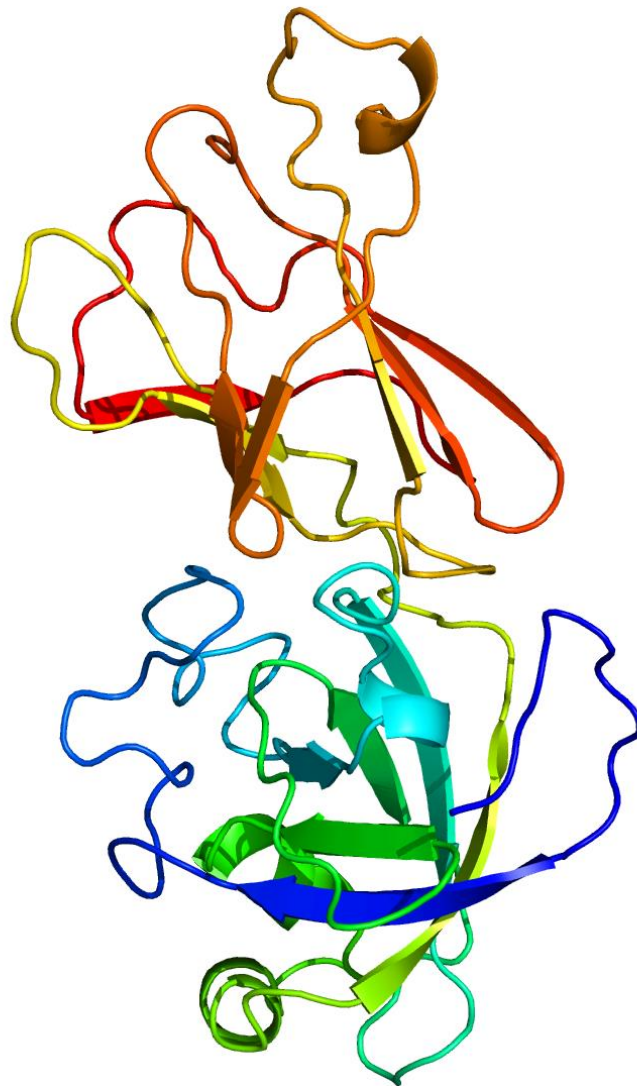
Locus: LOC_Os10g40730

Gene Model: LOC_Os10g40730.1

Description: OstEXPB-21

Family: Beta Expansin

3D structure:



GENOME DATABASES

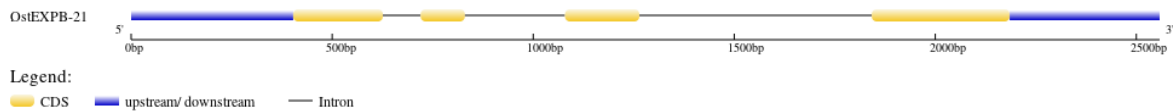
Phytozome: https://phytozome-next.jgi.doe.gov/info/Osativa_v7_0

KEGG: <https://www.genome.jp/entry/T01015>

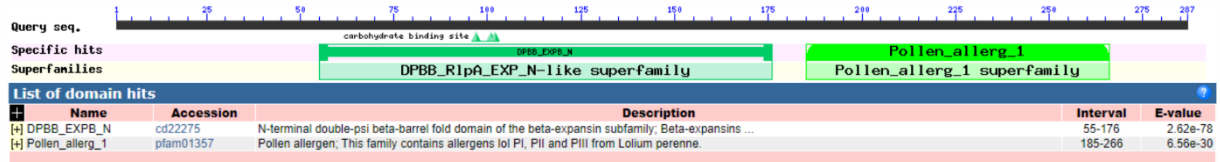
EXTERNAL RESOURCES

<http://rice.uga.edu/>

GENE STRUCTURE



DOMAIN ARCHITECTURE



SEQUENCES

Peptide

>OstEXPB-21

MGSLSSLAAAAVFLSLLAVGHCAAADFNATDADADDFAGNGVDFNSSDAAVYWGPW
TKARATWYWGQPNGAGPDDNNGACGFKHTNQYPFMSMTSCGNQPLFKDGGKGCSCY
KIRCTKDQSCSGRSETVIITDMNYYPVAPFHFDLSGTAFGRLAKPGLNDKLRHSGIIDI
EFTRVPCEFPGLKIGFHVVEEYSNPVYFAVLVEYEDGDGDVVQVDLMESKTAHGPTG
RWTPMRESWGSIWRLDTNHRLQAPFSIRIRNESGKTLVANNVIPANWRPNTFYRSFV
QYS*

CDS (coding sequence)

>OstEXPB-21

ATGGGCTCGCTGTCCTCTCTCGCCGCCGCGGCGGTGTTTCTCTCCCTCCTCGCCGT
CGGCCACTGCGCCGCCGCCGACTTCAACGCCACCGACGCCGACGCCGACTTCGCC
GGCAACGGCGTGGACTTCAACTCCAGCGACGCCGCCGTCTACTGGGGCCCCTGGA
CCAAGGCCAGGGCCACCTGGTACGGCCAGCCCAACGGCGCCGGCCCCGACGACA
ACGGCGGCGCGTGCGGGTTCAAGCACACCAACCAGTACCCGTTTCATGTCGATGAC
CTCCTGCGGCAACCAGCCATTGTTCAAGGACGGCAAGGGATGCGGCTCTTGCTAC
AAGATCAGATGCACCAAGGACCAGTCGTGCTCCGGCAGGTCGGAGACGGTGATC
ATCACCGACATGAACTACTACCCGGTGGCTCCGTTCCACTTCGACCTCAGCGGCA
CGGCGTTCGGCAGGCTCGCCAAGCCTGGCCTCAACGACAAGCTGCGCCACTCCGG
CATCATCGACATCGAGTTCACCAGGGTGCCATGCGAGTTCCTGGGGCTCAAGATC
GGGTTCACGTGGAGGAGTACTCGAACCCTGTGTACTTCGCGGTGCTGGTGGAGT
ACGAGGACGGCGACGGCGACGTGGTGCAGGTGGACCTGATGGAGTCGAAGACGG
CGCACGGGCCGCCGACGGGGAGGTGGACGCCGATGAGGGAGTCGTGGGGCTCCA
TCTGGAGGCTGGACACCAACCACAGGCTCCAGGCCCCCTTCTCCATCCGCATCCG
CAACGAGTCCGGCAAGACGCTCGTCGCCAACAACGTCATCCCGGCCAACTGGAG
GCCAACACATTCTACCGCTCCTTCGTCCAGTACAGCTGA

Nucleotide

>OstEXPB-21

AGAGGCAGCTAGCTGAGCTGAGGCCAGCCTATCTATCTACCGGCCCAACTATCA
TCTGCCAACTTTTAATACGCGCTGCCGTAGCAAGAAGAAGAAGATGAGGAA
GAGGAGGACGGACGCTGCATGTCACCGTGCCAGGCCATGTGCCGCGGCCAACA
TGGCACGTTCTCCCCTCCAGTTCACTTCTCTCTGCTCACACACTAGCCTAGC
CAGTGTACTAGTGTGTAGTGTACCCACCTCGCTTATAAATACCCGGTTCGCGACT
ACGGCCACACAAACCAACACCCCCACTCATCTCACTTCACTCTCTTTCTCTTCTCT
TCACTTCACCACCGCCACCTCTCTCATCGGATCCCTGCAGAGGAGGAGAGGGCAG
TGGCGGGCAAAGGGCGACATGGGCTCGCTGTCCTCTCTCGCCGCCGCGGGTGT
TCTCTCCCTCCTCGCCGTCGGCCACTGCGCCGCCGCGGACTTCAACGCCACCGAC
GCCGACGCCGACTTCGCCGGCAACGGCGTGGACTTCAACTCCAGCGACGCCGCCG
TCTACTGGGGCCCCTGGACCAAGGCCAGGGCCACCTGGTACGGCCAGCCCAACG
GCGCCGGCCCCGACGACAACGGTACGGCTTGTGATATCTTTGCTCGTTTTTCTTCT
TCTTCTCCGACGATCTGCTGCTTCTTTCCGGCAATGTGGCTCACAAAATCTTGATC
CAGGCGGCGCGTGCGGGTTCAAGCACACCAACCAGTACCCGTTTCATGTGATGAC
CTCCTGCGGCAACCAGCCATTGTTCAAGGACGGCAAGGGATGCGGCTCTTGCTAC
AAGGTGAGTAGAGTACTCCAACTAATCAAAGATTAAAGAAAGAAAAAGAAGC
CCATTTACATGGGGGGCCTAACTGTCAAAGCAGTGCATGCCGTTGCAGTCTTGAC
CATCGGTCCGCAGGGTGGGACCCACCGCCGAGAGCATGTGCGCGTGGCCCCCTCC
ACCCCGTTTTTCGGTGGCAGTGATTGGCGCGCCAAATGCATTCAATGCTAATGTT
TTTTCTTTTTTTTTTTTTTTTTAACATTACAGATCAGATGCACCAAGGACCAGTCG
TGCTCCGGCAGGTCCGAGACGGTGATCATCACCGACATGAACTACTACCCGGTGG
CTCCGTTCCACTTCGACCTCAGCGGCACGGCGTTCGGCAGGCTCGCCAAGCCTGG
CCTCAACGACAAGCTGCGCCACTCCGGCATCATCGACATCGAGTTCACCAGGTCA
GTGAAAGAAACCACATTGTAAGTACTGATGTAGTAGTGGTGGTAGTGTAGCCCT
CCAAATCTGCCGTTGAAATTTGCTTCCAGTACTACTACTAGTAGAGGGTAAAAGT
TGGGTGGAGTGGATGATGAGATGAGTGGATCCACCAACTGCACACCTTTAACTC
CATTTCCGGACACCGGCAATGGATTGCACATGCATGTGCAGCTCAGATGCAATGC
AGCAACAACCTTTATTAGGTTTAGGATGTTTTTTTTTAAAAAAAATTTTCATCCTCT
GCCAGACTGCAACATGCTCGTTTTTTGGCTACTAGCAGTAGGCACGCCTCCCTTCTG
CAGCCAAACGTATGATGCGTGCCCTGCTATTATACGCCACCGGCCACCCCATTTCT
CATCTTGTAGTAAAATGCTTTTTTATCAATCAATGGGCCCAATCCGATTAACAAA
AAAAGTAGGACACGATTATTGTATTTCCACATGACCAGTAAAGCAGGCAGCATAT
GACAAGATTAGCAGCGGAGTAATTTCACTTGTGTTTAATTAATTAATGGTGGGA
TTCGTGTGATGTGATGGTGCAGGGTGCCATGCGAGTTCGCCGGGGCTCAAGATCGG
GTTCCACGTGGAGGAGTACTCGAACCCTGTGTACTTCGCGGTGCTGGTGGAGTAC
GAGGACGGCGACGGCGACGTGGTGCAGGTGGACCTGATGGAGTCGAAGACGGCG
CACGGGCCCGACGGGGAGGTGGACGCCGATGAGGGAGTCGTGGGGCTCCATC
TGGAGGCTGGACACCAACCACAGGCTCCAGGCCCCCTTCTCCATCCGCATCCGCA
ACGAGTCCGGCAAGACGCTCGTCGCCAACAACGTCATCCCGGCCAACTGGAGGC
CCAACACATTCTACCGCTCCTTCGTCCAGTACAGCTGAACCGCCGCTCGCCGGCG
GCGACCCTCGGCGCCGGCATCGCCGCCGCTGCTGCTGCTAGTAATACTACTACTG
CTATGATGTAATTGTGTTACCGGTTGGGTTCTTTGAGTTTGTGGGGTTGGGGATT
GTGTGGTCCGGTCTGTGTTGCGATTTGCAGAAACCGGGCGAGCGAAAGAAGAAAA
AAAAGCTGTGTGGGAAATGGAGGAGGTAGGCGTACAAGGTTACGCTCTCCCGC
CCACTCTCGCTTTTATAATTTATCATTTTCAAATGGTGTGATGATATGATGATTAATC
AAAAGGATTATATTGCTACTTAAATTTGTATGGTACTACCATTAGCTTGCTGTGATC
TGTATCTATCCTCCCTGTTTGCCTA