

IDENTIFICATION

Species: *Miscanthus sinensis*

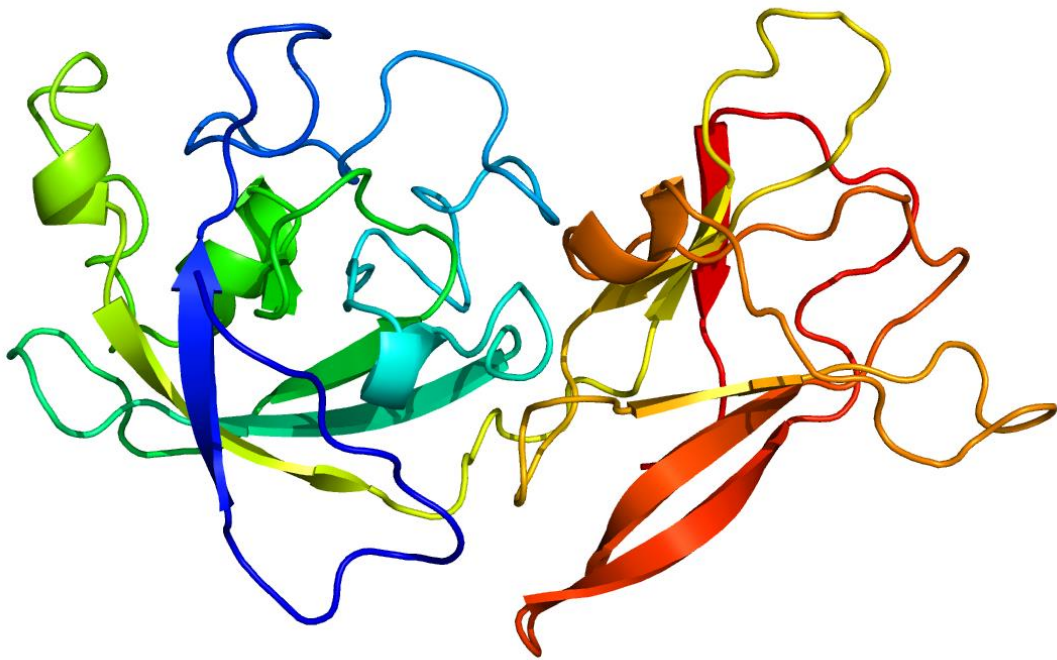
Locus: Misin19G260900

Gene Model: Misin19G260900.1.p

Description: McsEXLA-06

Family: Expansin Like Alpha

3D structure:



GENOME DATABASES

Phytozome: https://phytozome-next.jgi.doe.gov/info/Msinensis_v7_1

KEGG:-

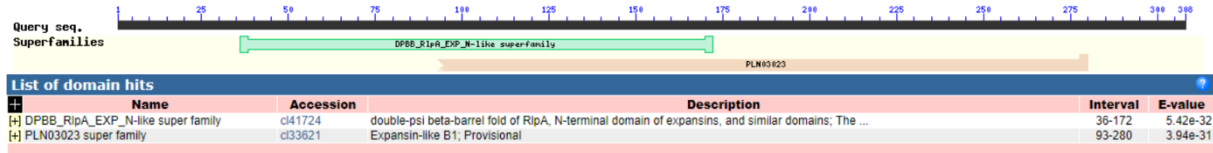
EXTERNAL RESOURCES

<https://grass-genome-hub.southgreen.fr/Genomeassembly/47213>

GENE STRUCTURE



DOMAIN ARCHITECTURE



SEQUENCES

Peptide

>McsEXLA-06

MAAVLTMVLLRLFTTGGLIIFLLCPASCLARPPHSSNNYYCDWCPRHSTASPDLDALL
RGAGTATEDGGACGAAAELGGGAPHVASAGADFFRDGGGCGVCYQLRCRDQRV
CGDGGVKVVVAVAGAAANRTGFLLTTEAFAAMSRPGMSPDQLLPSLDGNAVQVDFRRI
PCEYNNKNLSIRVEEGSRHPAHLAINFLYQGGQTDIAAVEIAHAAAPPAWRPMPAPVR
RRGVVTWRTSRAPAGPLQLRLVVTAGVGGKWL RAGGDVVPADWRPGQVHDTGIR
VRDIALTTCARSCRARRPPVVAGSEELR*

CDS (coding sequence)

>McsEXLA-06

ATGGCCGCGTCCTGACGATGGTGCTTCTTCGTCTCTTACCACACTGGCGGCCTCAT
CATCTTCTGTTGTGTCCCGCGTCCTGCCTTGCTCGTCCTCCTCATTCCAGCAACA
ACTACTACTGCGACTGGTGCCCTCGCCACTCCACCGCCTCCCCGACCTCGACGC
GTTGCTGCGTGGTGTGGTACTGCTACAGAAGACGGCGGTGCTTGCAGGGGCGCG
GCGGCGGAGCTGGGCGGAGGAGCGCCCCACGTCGCCAGTGCCGGCGCCGACTTC
TTCCGCGACGGCGGCGGCTGCGGCGTCTGCTACCAGTTGAGGTGCAGAGACCAG
AGGGTGTGCGGCGACGGCGGCGTCAAGGTCGTCTGGTGGCCGGCGCCGCAAC
CGGACGGGGTTCTGCTCACCACGGAGGCCTTCGCTGCGATGTCCAGGCCGGGCA
TGTCGCCCCGATCAACTGCTGCCAGCTTGGACGGCAATGCTGTTCAGGTTCGACTT
CAGGAGAATACCTTGCGAGTACAACAACAAGAACCTGTTCGATACGCGTGGAGGA
AGGGAGCAGGCACCCGGCGCACCTGGCCATCAACTTCTGTACCAGGGCGGGCA
GACGGACATCGCGGCCGTCGAGATCGCGCACGCGGCGGCGCCGCCCGCGTGGCG
GCCATGGCGCCCGTGCAGGCGCGGCGTGTGACGTGGCGCACCTCGCGCGCC
CCGGCGGGGCGCTGCAGCTTCGGCTCGTCTCACAGCCGGCGTCCGGCGCAAGT
GGCTGCGGGCCGGCGGGGACGTGGTGGCCGGCGACTGGCGGCCTGGGCAGGTAC
ACGACACGGGGATCCGTGTCCGCGACATCGCCCTGACCACCTGCGCCCGCTCCTG
CCGCGCGCGACGGCCCGCGGTGGTGGCCGGCAGCGAGGAGCTCAGGTAG

Nucleotide

>McsEXLA-06

GGGACAGCGACGGCCGGAGGGAGGAGGCCGGCGTCCAGAGGACAGCGGGCGGCC
GTGGAGGAAGGGAGAGCCGGCGACAGATCAGCGGCGGCTAGGGTTTGCGGAAGC
GCGGCCGCAGGACGCGAACC GCGTCGGATACCATAAAAGCGAGTAGAATATGTG
TAATACGCAATGTATTCCTCAGAGACAAGCATTGTGTACATATTGACTTAACGGG
GAGCCAGGTACGGCAGGCCATGGGCCATGACTTGTTTACACTCTAACAGGGACG
GTGGAAACTAAAAACCGCCGCTCCGTGAGCAGAAAGTGACAAGGTGTATAAAA
AAATCATTTCTTTAATTGCGGAAGTTCCAAAAGAAGCAGTTTTTCGTAGCTTGTGTG
GTGTGGCCAAAGGGCAAGACACCAGAGCCGAAA ACTTGAACGACGAATGCGGC
GGCGGAAAGTGTTTGCACGCCATGGATGCGACAGCCATTTTGTTTCTACTACTTC
ACCCAGCCCCATCATGCGCAAACCCAATTGCGCCTTGCCCATCATCGACGACGA
CGACGTGTTCCCTCGAATTTGTCCGGTCTTTTTCTCCACGCACTCGACTCTCGTGCG
CCGTTTATTCTTTCTCCCGTTGGCTGGCATTGGCGGAATATGGCAGCGGCCTCATC
AGCTCGTTGCATTGATGTCCCCACGTTGTTGTTCCACTAGAGCACTACCACTACCA
TTCAACCCCATGGCTAGCAGCTAATATAGTAGCTCGCCCTCGCCCGCCCGGCCGG
CCGTCTCTTATCCATCGCCGCGGCCGTCCAAACTCCAGCAGGTAGCTAGCTACG
ATGACCTAGCTCTGCCTTTGTGGTTTGTGCCTCGCTCGAGCTGCAGCGCTCCCCTC
CGGTGCACCATGGCCGCGCTCCTGACGATGGTGCTTCTTCGTCTCTTACCCTGG
CGGCCTCATCATCTTCTGTTGTGTCCCGCGTCTGCTTGCCTTGCTCGTCTCCTCATT
CAGCAACA ACTACTACTGCGACTGGTGCCCTCGCCACTCCACCGCCTCCCCGAC
CTCGACGGTAAATAGGAACACTACTTGTTCGTTTGTACCTGTGGGTCCCCCGAT
GAAGCTCTCAGCTCAACCTCCTTCTCCCCGGCCCGGCCACTTGTTACATGATCAC
ATCAATCATCAATGTGCAGCGTTGCTGCGTGGTGCTGGTACTGCTACAGAAGACG
GCGGTGCTTGCGGGGCCGCGGCGGCGGAGCTGGGCGGAGGAGCGCCCCACGTGC
CCAGTGCCGGCGCCGACTTCTTCCGCGACGGCGGCGGCTGCGGCGTCTGCTACCA
GGTGGGTGTAGTCTGTAGTGCAGCTGACTTGCTCTGCAGCGCAATGTGTGCATAT
CTCTCCGGTTAAATGACAGTACTGTGTATTTCTGCTTGTAGTTGAGGTGCAGAGAC
CAGAGGGTGTGCGGCGACGGCGGCGTCAAGGTGCTCGTGGTGGCCGGCGCCGCC
AACCGGACGGGGTTCCCTGCTCACACGGAGGCCTTCGCTGCGATGTCCAGGCCGG
GCATGTCGCCCGATCAACTGCTGCCAGCTTGGACGGCAATGCTGTTACAGGTGCA
CTTACAGGAGGTGACGAAAATTCTGCAGTACATGCACCTGTTACATGAAAATTT
AGTTCCGAGCTAAAGATTCAAGCTTCCATGCAGAATACCTTGCAGTACAACAAC
AAGAACCTGTCGATACGCGTGGAGGAAGGGAGCAGGCACCCGGCGCACCTGGCC
ATCAACTTCCTGTACCAGGGCGGGCAGACGGACATCGCGGCCGTGAGATCGCG
CACGCGGCGGCGCCGCCC GCGTGGCGGCCCATGGCGCCCGTGCAGGCGCGGC
GTTGTGACGTGGCGCACCTCGCGCGCCCCGGCGGGGCGCTGCAGCTTCGGCTCG
TCGTCACAGCCGGCGTCCGGCGGCAAGTGGCTGCGGGCCGGCGGGGACGTGGTGC
CGGCGGACTGGCGGCCTGGGCAGGTACACGACACGGGGATCCGTGTCCGCGACA
TCGCCCTGACCACCTGCGCCCGCTCCTGCCGCGCGGACGGCCGCGGTGGTGGC
CGGCAGCGAGGAGCTCAGGTAGATGATTAGGCAGTAGGAGAAGACGATCAGGCA
GGCAGGCAGGCAAACAATGGCATTAACTGCAGGCGATCGAGATTAGCTTGTAC
ATACTGATGAACCTCCGTCGTACATGAAAGATTCCGCCCATTTTTTTAATGAGCTG
AATAATGATGAATCGATGATGGAGTTCGTCAATGAAAAGCGAAAACAACAAC
AAAGAGCTGATCTCTGATGCTGCGTTTCTTGCTGAATTATGGACAATCGGAGGGG
CCGATGGATCTCTGATTGACATGCATGGATGATGAAGGTTGCACAAGCTTTGGAT

TGGTGC GCAAGATTCGCTGTGACTGATGTAACAGAGCAGCTATATATTATATAGA
GCAGCAAAAATAAGAGGAAATATGTGTCTTTTCGAATAATTCAAGAAATGTATTTT
CATTTTTTTAAAGTTGAATGTCTACAGTTCATCCATATATATATGTACTAATAACA
CGAAAAAGCCTTAGTTGCAAAATCATTATTGAAAAATGTATAGAAAATGACAAA
ACTAGTGCAAGTATAATAGAAGACAAATT